

**UNI CARRIERS**

– UniCarriers Group –



**ELECTRIC COUNTERBALANCED FORKLIFT TRUCKS**

***FTB-A1 Series***

**3,000-4,000 lbs.**

(Class 1- Cushion Tire Type)

**TCM** CORPORATION

**ELECTRIC COUNTERBALANCED FORKLIFT TRUCKS**

# *FTB-A1 Series*

**3,000-4,000 lbs.**

(Class 1- Cushion Tire Type)

TCM's newest version of the FTB series three wheel electric lift trucks displays a new benchmark in leading edge design. These trucks are 100% AC powered and are engineered to be rugged and dependable in your daily operations. TCM electric forklifts deliver excellent productivity in a package that is reliable, comfortable and agile. For the ultimate in performance, you can count on TCM!



## Reliable

TCM lift trucks have earned their reputation for legendary reliability. The TCM FTB-A1 series features AC brushless motors and solid state controllers that deliver dependable operation with low maintenance. Precision built masts and hydraulic systems give long service life.

## Powerful

With 100% AC power, TCM lift trucks have higher travel and lifting speeds as well as superior starting and grade climbing abilities. Main controller settings can be adjusted to suit the individual needs of your customers.

## Productive

TCM electric lift trucks feature efficient AC motor technology with regenerative braking, neutral regeneration, and switchback regeneration to ensure the maximum daily battery duration and longer brake life.

## Comfortable and Safe

TCM's newest version of the FTB three wheel electric lift features a full suspension seat, adjustable steering column, ample leg room and smooth controls. In addition, all TCM sit-down forklifts feature an interlock system (travel/loading) for maximum safety.



Model Name	Capacity
FTB 15-A1	3,000 lbs.
FTB 18-A1	3,500 lbs.
FTB 20-A1	4,000 lbs.

# UPGRADED BASIC PERFORMANCE



## Faster travel and lifting speeds

Three standard power modes are available to suit your specific work application. Choose High Performance mode for fastest production, Economy mode for longest operating time, or Performance mode for an optimal blend of speed and operating run time. Also available is Manual mode for creating customized performance parameters.

**Travel Speed:** without load **10.0 mph**

**Lifting Speed:** without load **118 fpm**

**Gradeability:** with load **26 %**



# UNMATCHED EFFICIENCY

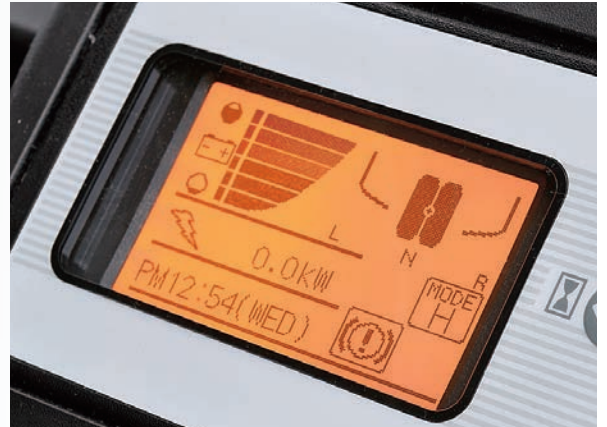
## Auto power off

The automatic power off feature is a standard feature that automatically cuts power to the truck when it has not been in use for a predetermined period of time (15 minute default setting). This helps extend battery run time.



## Energy consumption indicator

This indicator shows the power consumption rate for each job. It allows the operator to review his driving characteristics and become more efficient and productive.



## Three regeneration modes:

Regeneration is applied during braking, accelerator release, and switchback. This feature not only increases battery duration, but also helps reduce brake wear.

## On demand hydraulics

When either the steering or hydraulic functions are not activated for a set period of time, the hydraulic pump motor shuts off until needed. This helps increase battery run time.



# COMFORT AND CONTROL

## Ergonomic controls

Comfortable pedal positions and well placed hydraulic controls help reduce operator fatigue.



## Full suspension seat

TCM's FTB-A1 series trucks all come standard with a cloth full suspension seat featuring operator weight compensation adjustment, adjustable seat back and a retractable seat belt.



## Automotive style signal and direction controls

The travel direction switch and turn signal functions have been positioned just below the steering wheel for ideal operational control. The turn signal switch is self-cancelling and contains an integrated switch for the headlights, front turn signal lights, and rear combination lights.



## Adjustable tilt steering column

The steering column is adjustable to bring the steering wheel into an optimum position for a variety of operator sizes.



# SUPERIOR DRIVEABILITY

## Minimal turning radius

TCM's FTB-A1 series trucks feature both a compact design and a 90 degree rear wheel steering angle. This allows for tight turning that is ideal for right-angle stacking operations.



## Operator specific control

With the new on-board control interface, up to five unique operational profiles can be programmed to match individual operator needs. Also, rear tire angle is displayed on the panel when traveling under 2 mph – a highly useful tool in tight spaces.



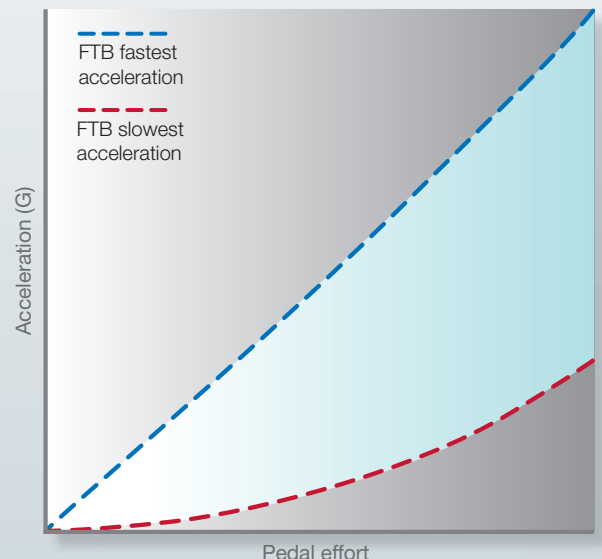
## Excellent forward visibility

With a combination of high seating position, small diameter steering wheel, standard side view mirrors, and a low profile dashboard, visibility is optimized.



## Interactive acceleration control

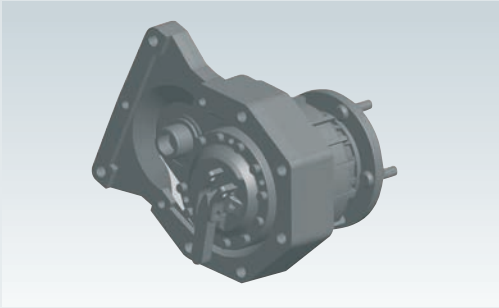
This system monitors how quickly the accelerator pedal is depressed and controls the truck's acceleration accordingly. The sensitivity of this feature is adjustable.



# ADVANCED TECHNOLOGY

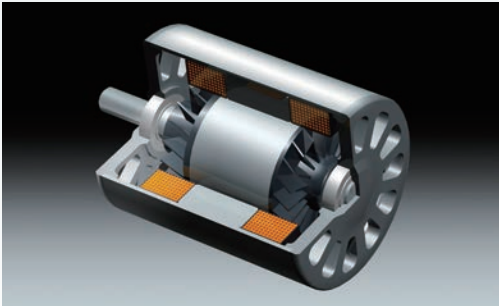
## Wet disc brakes

The six-disc wet brakes require less maintenance and assure stable braking performance regardless of the floor conditions.



## AC motors

Three phase AC motors are used for both the drive and load handling systems. These motors have no brushes, commutators or contactors to replace. AC motor technology provides much more efficient operation than previous DC motor forklifts.



## Dependable controller

With a weather resistant design and careful placement, these new controllers offer consistent operation with excellent control and minimal maintenance.





# CONVENIENT MAINTENANCE

## On board diagnostics

The new LCD instrument panel displays all operating systems and any failure codes that may occur. There is no need for a separate handset diagnostic tool to evaluate performance and perform diagnostic troubleshooting.



## Easy battery access

Clear access is provided to the battery for routine filling and maintenance. The sturdy yet simple locking hood shock makes for convenient working conditions during battery inspection or controller maintenance.



## Convenient fluid ports

Checking and maintaining fluid levels in TCM's new FTB-A1 are simple tasks with the thoughtfully placed fill and dipstick location.



# ENHANCED SAFETY



## Controlled-rollback system

Through regenerative coasting, TCM's FTB-A1 series trucks provide improved control during descent on inclines.

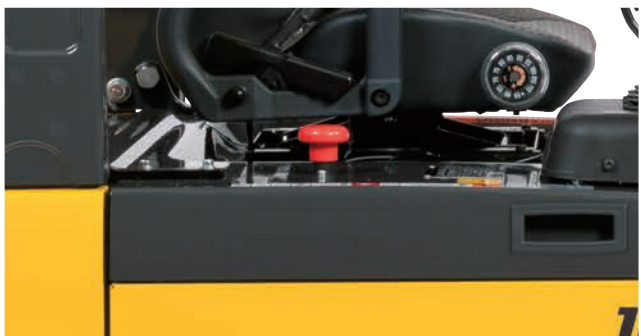


## Interlock system

Both the load handling system and driving systems are disabled should the driver leave the seat.

## Steering angle sensitive travel speed limiter

The truck speed is automatically reduced if the rear wheel angle exceeds a preset value. This helps prevent accidental tipping of the truck.



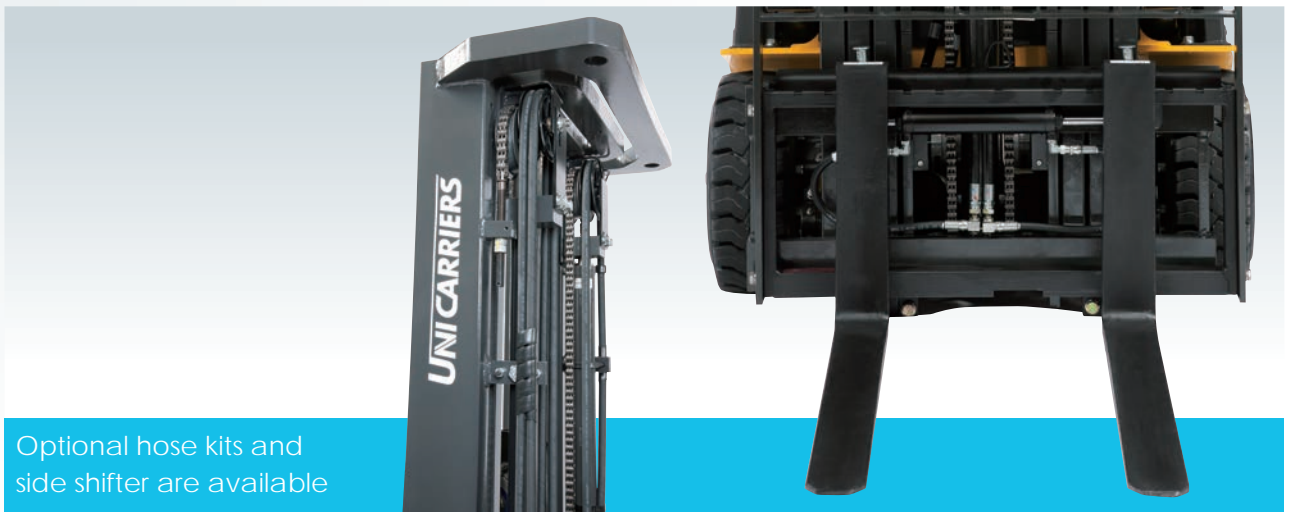
## Emergency shut-off switch

In case of an emergency the truck's power can be quickly shut off using this optimally placed switch.

# EXCELLENT OPTIONS - EXCELLENT STANDARDS



Standard lighting includes overhead guard mounted rear combination lights as well as headlights with guards and front turn signals



Optional hose kits and side shifter are available



Standard small diameter steering wheel with spinner knob



Optional rear driving light  
Optional strobe light



ELECTRIC COUNTERBALANCED FORKLIFT TRUCKS

## *FTB-A1 Series*

**3,000-4,000 lbs.**

(Class 1- Cushion Tire Type)

- TCM retains the right to change these products and specifications without incurring any obligation relating to such changes.
- These products and specifications are subject to change without notice.
- Photos and illustrations may or may not include optional equipment and accessories.
- Features and specifications may vary depending on markets.

by

**UNICARRIERS**

**UniCarriers Corporation**

Bellport E  
6-22-7, Minami-Oi, Shinagawa-ku  
Tokyo 140-0013, Japan  
TEL: +81-3-6730-3370  
FAX: +81-3-6730-3371  
<http://www.unicarriers.co.jp/en/>

Distributed by